

# 520

## SOUTH OYSTER BAY ROAD

OUR LADY OF MERCY SCHOOL  
HICKSVILLE, NY



### FOR LEASE

### 24 Classrooms + Library

**+/- 34,016** Square Feet  
on 2 Floors

+/- 17,008 SF Classroom Space on First Floor  
+/- 17,088 SF Second Floor  
+/- 7,280 SF Gym  
+/- 11,422 SF Cafeteria

*Asking Lease Price:*

**\$20.00 PSF** + Energy and CAM

**EXCLUSIVE AGENT**

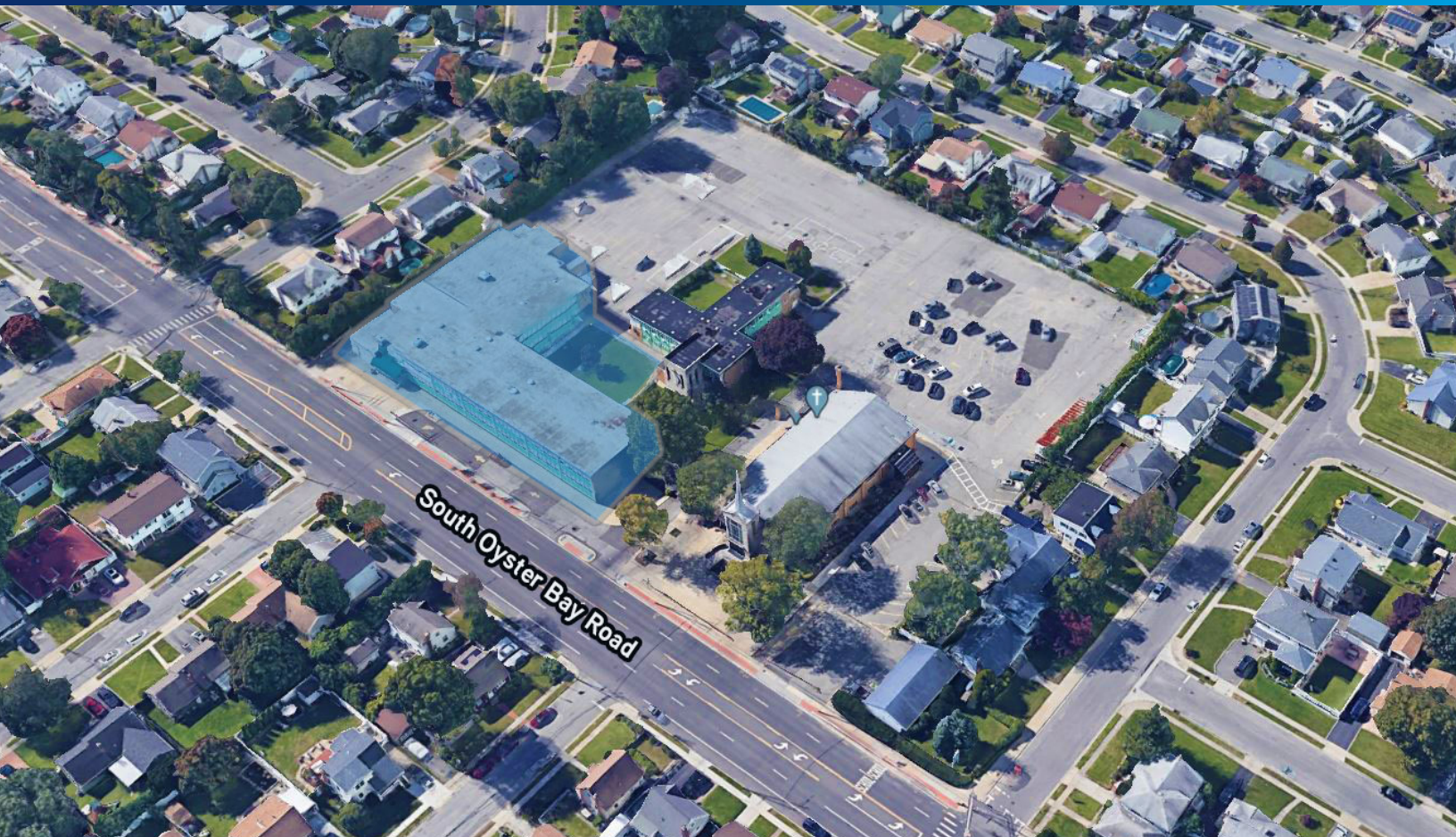
**GUS NUZZOLESE, Esq.**  
Executive Managing Director  
Associate Broker  
516 284 3456 | DIRECT  
LONG ISLAND, NY  
[gus.nuzzolese@colliers.com](mailto:gus.nuzzolese@colliers.com)



# 520

## SOUTH OYSTER BAY ROAD

OUR LADY OF MERCY SCHOOL  
HICKSVILLE, NY



## FOR LEASE

### Highlights

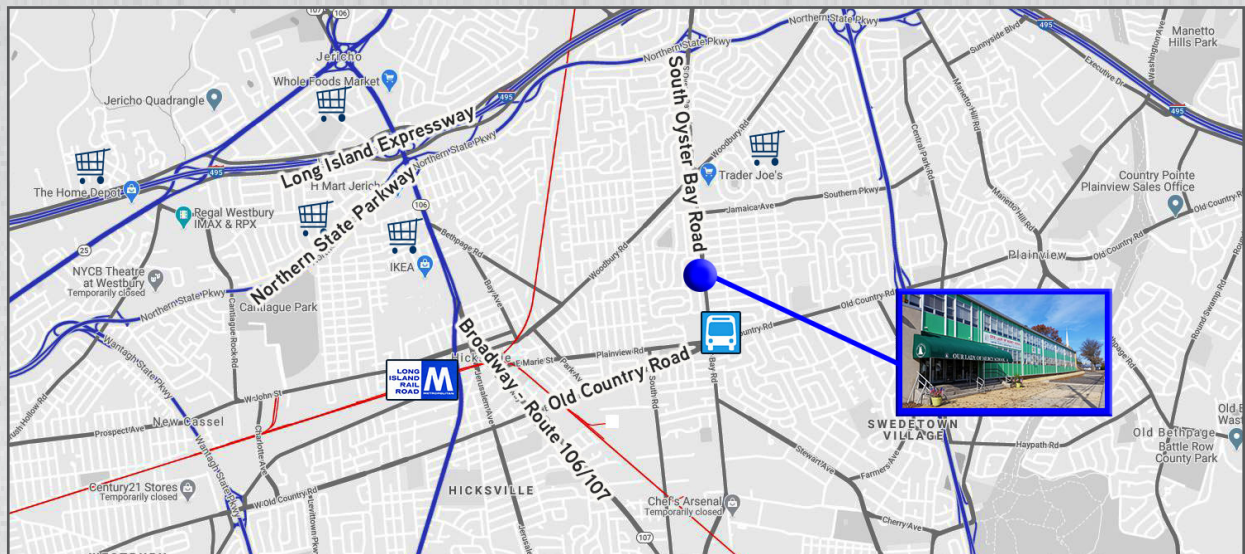
- › Quick highway access to the Long Island Expressway (Exit 43) and the Northern State Parkway (Exit 36S)
- › Walking distance to the N78/N79 bus transit (Old Country Road and South Oyster Bay Road)
- › Ideal for *Not-For-Profit* or a special needs school
- › Gymnasium amenity available for use
- › 800 AMP 600 VAC electrical power
- › High ceilings and spacious rooms
- › Ample parking
- › Windows open



# 520

## SOUTH OYSTER BAY ROAD

OUR LADY OF MERCY SCHOOL  
HICKSVILLE, NY

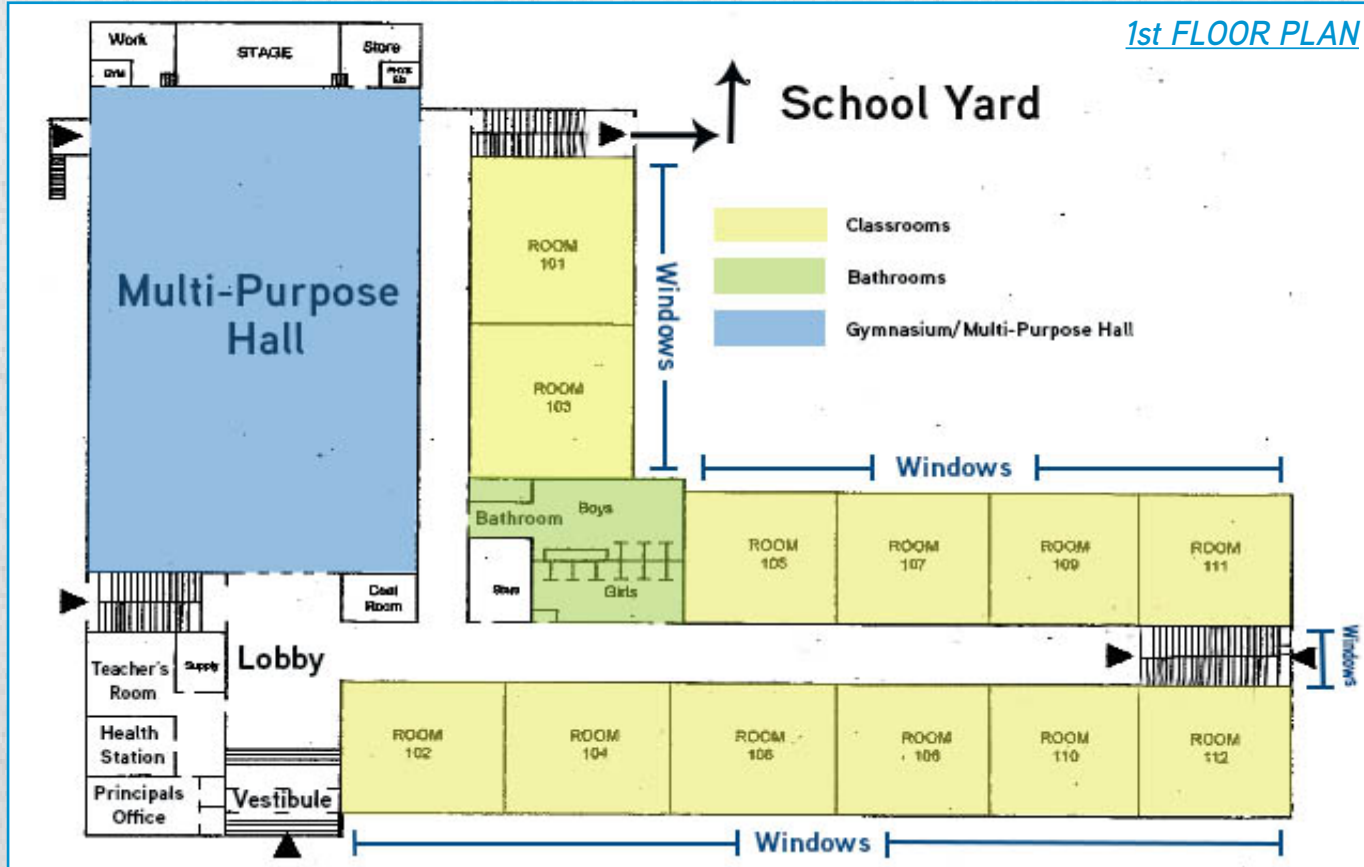


[www.colliers.com](http://www.colliers.com)

**Colliers**  
INTERNATIONAL



1st FLOOR PLAN



## OUR LADY OF MERCY SCHOOL | 520 SOUTH OYSTER BAY ROAD

2nd FLOOR PLAN

